

Technical datasheet



DIAGNOSTICS[®]

In control



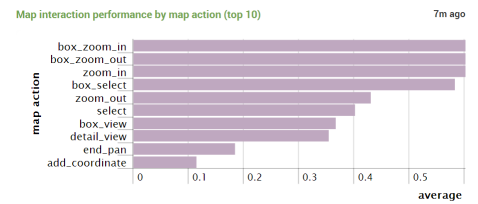
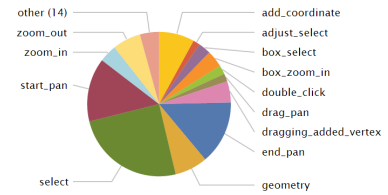
diagnosticsincontrol.com



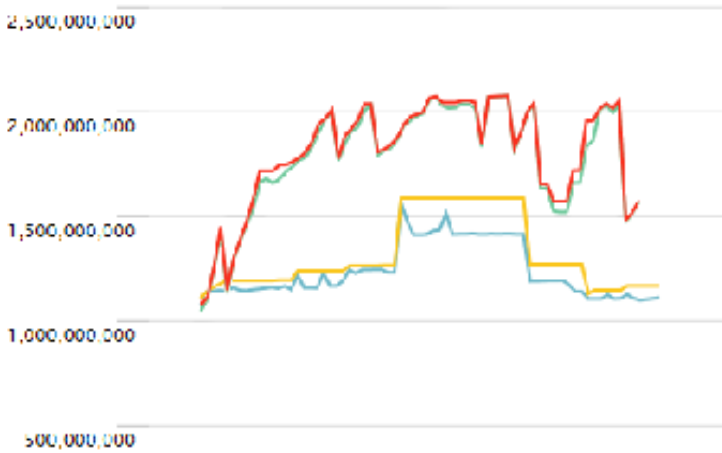
Are you wondering if your Smallworld™ can perform better? Are you wondering how to reduce the TCO of your installation? Realworld Systems has developed the fast and easy way to increase production, enhance performance of Smallworld™ and save valuable server capacity: Realworld Diagnostics.

Since every installation is different, just as every user, the only way to correctly measure your performance is analysing your own system. We use **live data**, obtained from your users and your system. Not by using standardised tests, but by monitoring every user, every move, and every click. Combined with waiting times and system events this provides a **clear overview** of your Smallworld™ core application, its performance and its bottlenecks. This overview offers you the opportunity to dramatically improve your system.

Realworld Systems has over twenty years of experience with Smallworld™. We have used this experience to create the best Smallworld™ analysing tool ever. We have proven Diagnostics is able to **lower your TCO** dramatically. Let us convince you. We'll give you Diagnostics on trial for a month and show you how your system can be improved. Your users will thank you for it. And so will your CFO.



'Diagnostics gave us valuable insight into our Smallworld installation'



Before (red): This is an overview of the most memory consuming Smallworld™ session in a company at a specific moment in time. At the moment a session hits 2GB, it crashes: the reason of the spikes in the graph. The affected user has to restart his/her session and loses time.

After (yellow): no session gets near the 2GB maximum, all users can continue their work without any problems.

Both graphs were made on a Monday, before and after running Realworld Diagnostics and following Diagnostics' suggestions, at a live Smallworld™ installation. The graph shows the time frame between 0:00 and 24:00h.

